



RICHLAND ONE

ENGAGE • EDUCATE • EMPOWER

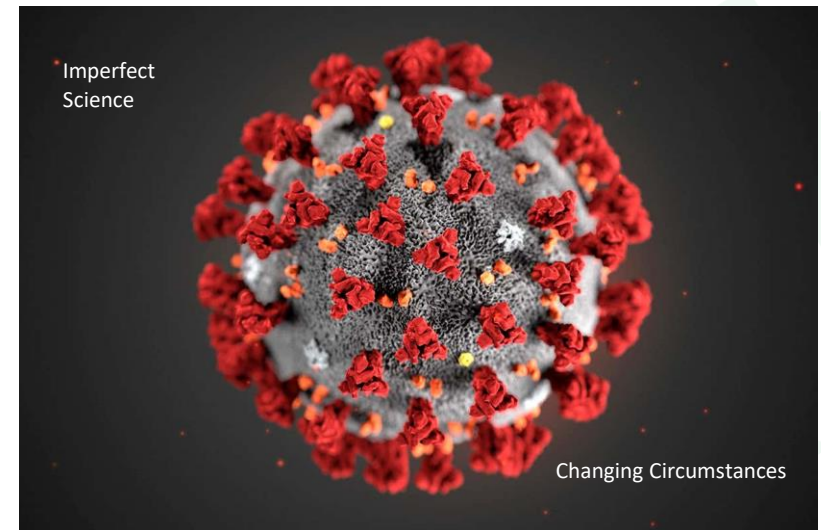
Reopening Schools Board Work Session

October 9, 2020

Goal



Develop an ***adaptive plan*** for the ***safe reopening*** of Richland One schools that can evolve based on science and circumstances.



Guidance to Support Decisions



- AccelerateEd Task Force
- SC Department of Health and Environmental Control (SCDHEC)
- Centers for Disease Control (CDC)
- American Association of Pediatrics (AAP)
- Advice of Health Care Professionals

RESTART STRONG!

COVID-19 Risk Rating	LOW RISK	MEDIUM RISK	HIGH RISK
Instructional Model	Traditional	Hybrid/ Traditional	eLearning
District Response	School Buildings Open <p>Students in grades PreK4 -12 will attend school in the traditional model. Social distancing and other preventative practices will be followed.*</p>	School Buildings Open <p>Students in grades PreK-12 will attend school in a hybrid model where they receive face-to-face instruction two days a week and eLearning instruction at home three days a week.</p> <p>The district will transition to the five-day, face-to-face model as soon as possible for students in grades PreK-5. Social distancing and other preventative practices will be followed.*</p>	School Buildings Closed <p>Students will be engaged in learning at home until the risk rating allows for transition to the hybrid and/or traditional models.</p>

*Note: Social distancing (as recommended by the CDC) will be accommodated to the greatest extent possible.



DATA FOR CONSIDERATION



Current Status – Two Approaches



Phase 1 eLearning

- 16,761 students

Virtual School Program

- 5,406 students in K-12
- 181 VSP teachers
- 770 “combination” teachers
- 110 students cleared for PreK VSP

n=22,277

Technology and Connectivity



- Grades 3-12 - devices issued
- Grade 2 – 1558 devices issued last week; 919 to be delivered by the end of this week
- PreK-Grade 1 - *devices expected by end of October*
- Close to 5,000 hotspots delivered to students

COVID-19 Trail in Richland County



Date	2-week Incidence Rate (Level)	Incidence Rate/100,000	2-week Trend in Incidence Rate	2-week percent positive rate (Level)	2-week percent positive rate
July 5	High	348.1	High	High	19.8%
July 20	High	479.8	High	High	23.4%
September 7	High	529.4	High	High	27.7%
September 14	High	407.0	Low	High	19.6%
September 21	High	281.2	Low	High	18.3%
October 1	High	249.2	Low	High	11.6%
October 8	High	211.2	Low	High	11.1%

Select Student Demographic Data



- Percent Poverty using Direct Certification X Multiplier = **81.568%**
- Race/Ethnicity
 - **Black: 69.7%**
 - **White: 19.0%**
 - **Other: 11.3%**



PARENTS/GUARDIANS - Level of Comfort with Students Returning to School - 9/2020



	Very Uncomfortable	Uncomfortable	Comfortable	Very Comfortable
ALL (6,588)	33.2%	24.8%	23.0%	19.0%
Elementary (3,148)	31.2%	23.1%	24.8%	20.9%
Middle (1,420)	33.9%	25.4%	22.0%	18.6%
High (1,976)	35.4%	27.2%	20.7%	16.6%
Special (13)	61.5%	23.1%	7.7%	7.7%
Charter (31)	45.2%	22.6%	25.8%	6.5%

Other Considerations



- Schools include both students and adults.
- **Adults** transport, feed, teach, and support students.
- Adults working within a school do not all have the same zip code.
 - Example: Teachers in 3 of our largest elementary schools have 10-15 different zip codes. This is an important consideration, given some have suggested we allow schools in some zip codes priority in opening.

Therefore, adult data must be considered.

SCHOOL STAFF - Return to Work Comfort Level - 9/2020



	Very Uncomfortable	Uncomfortable	Comfortable	Very Comfortable
ALL (2,471)	42.8%	35.4%	15.4%	6.5%
Certified School Staff (1,739)	44.4%	32.7%	15.8%	7.1%
Classified School Staff (732)	38.5%	39.6%	16.4%	5.5%

* District staff responses not included in this report.

Select R1 Adult Populations



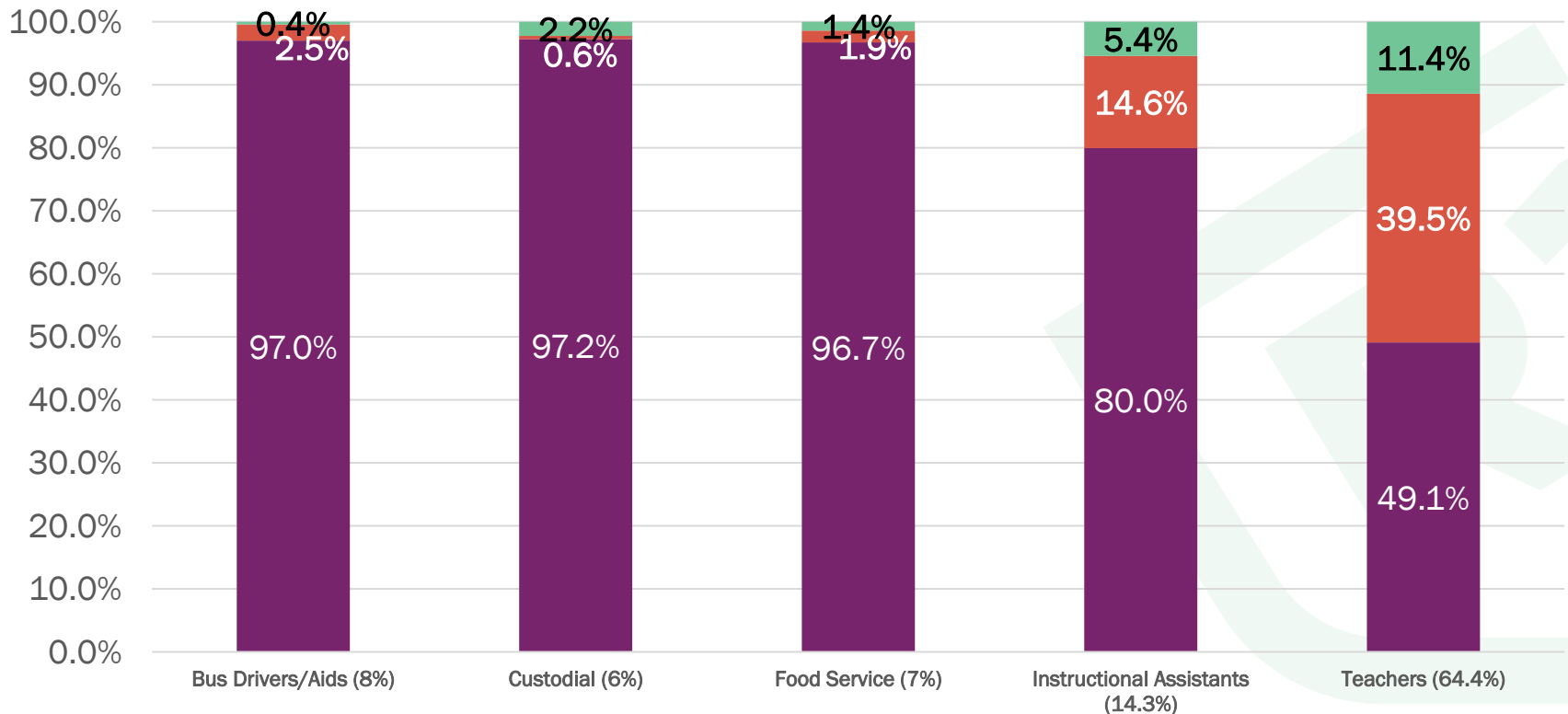
Group	Number
Bus Drivers/Aides	236
Custodial	181
Food Service	214
Instructional Assistants	424
Teachers	1907

Race of Select R1 Adult Populations



Richland School District One Position Category by Race

■ Black (64%) ■ White (28%) ■ Other (8%)

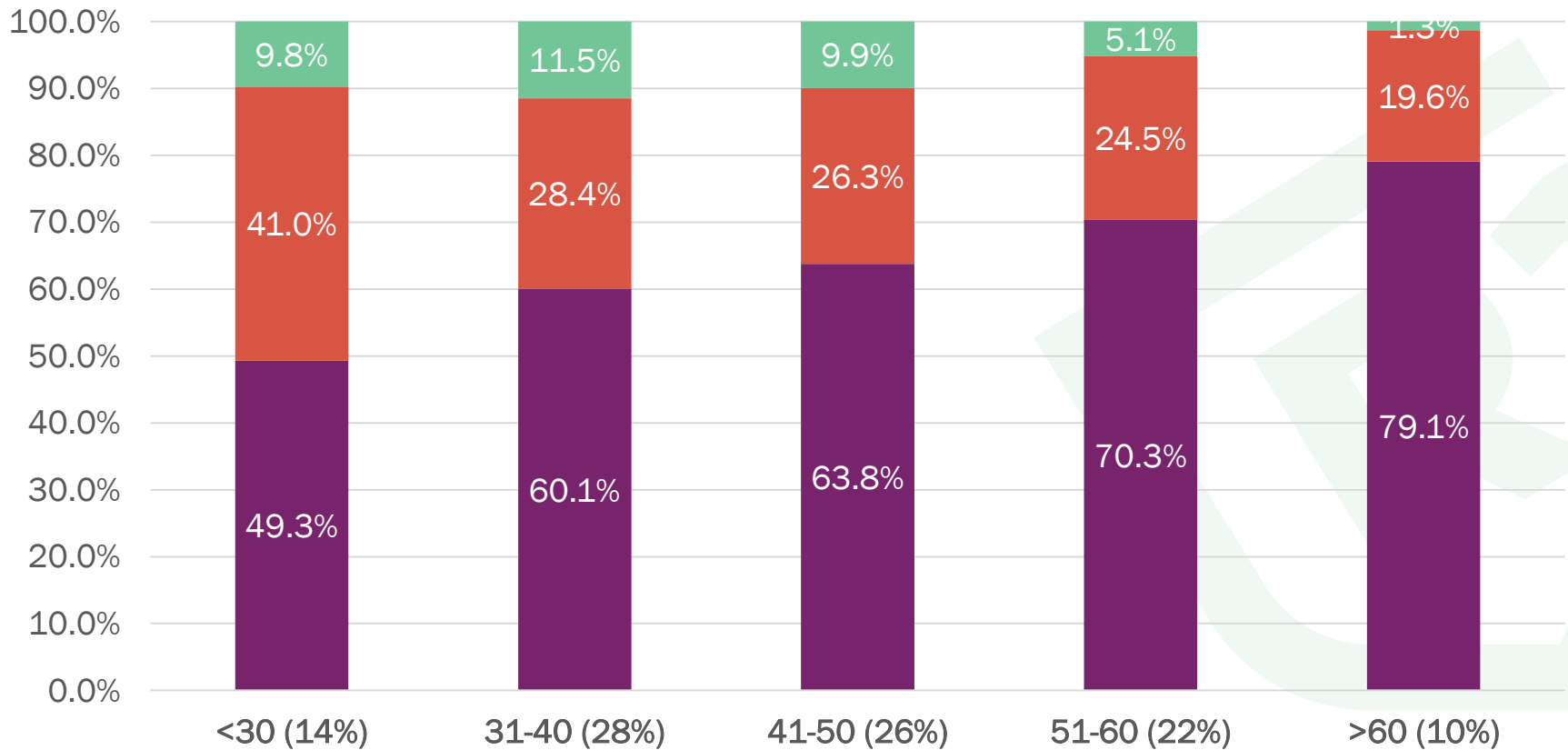


Age Range by Race of Select R1 Adult Population



Richland School District One Employee Age Range by Race

■ Black (64%) ■ White (28%) ■ Other (8%)



COVID-19 Hospitalization and Death Rate by Race/Ethnicity



Rate ratios compared to White, Non-Hispanic Persons	American Indian or Alaska Native, Non-Hispanic persons	Asian, Non-Hispanic persons	Black or African American, Non-Hispanic persons	Hispanic or Latino persons
Cases	2.8x higher	1.1x higher	2.6x higher	2.8x higher
Hospitalization	5.3x higher	1.3x higher	4.7x higher	4.6x higher
Death	1.4x higher	No increase	2.1x higher	1.1x higher

Source: CDC, August 18, 2020

Vacancies



Position	Number of Vacancies
Teacher Elementary - 24 Middle - 17 High - 10 Special – 12.5	63.5
Instructional Assistant	19
Bus Driver & Bus Aide Bus Driver – 12 Bus Aide – 4 Manager - 2	19
Custodian (Part-time and Full-time)	94
Student Nutrition Services	30

Additional Considerations



- Currently have 22 E-FMLA requests/approvals
- Currently have 94 total 504 Accommodation requests
- Expect FMLA, E-FLMA and 504 Accommodation requests to increase based on input from teachers and administrators if we move out of Phase 1 before it is safe.

COVID-19 Building Services Incidents

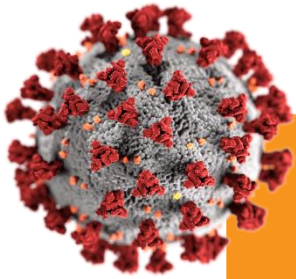
June 1 – Present

(as Reported by Building Services)



- Incidences involving 152
 - 15 during LEAP
 - **72 since September 1**
- 1 building with all administrators quarantined for 14 days; 1 administrator still out with COVID-related illness
- 22 custodians out 1-3 weeks
- 2 buildings left with no custodians for 1 week
- 1 custodian resignation due to COVID-19
- 3 building closures

COVID Data Reported by Nursing Services (through October 4)



Week	Students Positive Results*	Staff Positive Results*	Pending Results/Quarantine*	Total Positive Cases*
08/17/- 09/04	9	9	5	18
09/07 - 09/11	3	4	19	7
09/14 - 09/19	3	2	13	5
09/20 - 09/27	0	5	15	5
09/28-10/04	0	3	11	3

***This category will change as test results becomes available.**

CDC Indicators and Thresholds for Risk of Introduction and Transmission of COVID-19 in Schools



Core Indicators

- 2-week incidence rate per 100,000
- 2-week percent positive rate
- Ability to implement the 5 mitigation strategies
 - *Correct use of masks*
 - *Social distancing*
 - *Hand hygiene and respiratory etiquette*
 - *Cleaning and disinfection*
 - *Contact tracing*

Secondary Indicators

- Percent change in incidence rate in the last 7 days
- Percent occupied hospital beds
- Percent occupied ICU hospital beds
- Percent beds occupied by COVID-19 patients
- Existence of localized community/public setting COVID-19 outbreak

Source: <https://www.cdc.gov/coronavirus/2019-ncov/community/schools-childcare/indicators.html#thresholds>, (9/15/2020)

Known CDC Indicators Data



Indicators	
Incidence per 100/000 – 211.2 (SCDHEC, October 8, 2020)	Highest risk of transmission
Positivity rate – 11.1% (SCDHEC, October 8, 2020)	Highest risk of transmission
Ability to implement 5 mitigation strategies	Lowest to Lower risk of transmission
Percent hospital beds occupied – 81.72% (Midlands) *SCDHEC, 10/6/2020	Moderate risk of transmission
Percent hospital beds occupied by COVID (N=55 on 10/6 in Prisma Midlands and trending down) (5-10% of available beds) *Prisma, 10/6/2020	Lower risk of transmission
Existence of localized outbreak (No)	Lower risk of transmission



PREPAREDNESS TO IMPLEMENT 5 MITIGATION STRATEGIES

Schools



- Automatic hand sanitizer stations
- Automatic paper towel dispensers
- Foam soap dispensers
- Alcohol wipes
- Manual hand sanitizer
- Sneeze guards for staff desks
- Disposable masks
- Bottled water
- Thermometers
- Electronic wipes
- Safety signs – 6 feet, washing hands, wear masks, etc.

Classrooms



- Automatic hand sanitizer stations
- Desk guards
- Teacher masks
- Face shields, if needed
- Gloves, if needed

Early Childhood and Special Services

- Plexi-glass (for assessments)



Isolation Rooms



- Thermometers
- Tyvek suits
- Gloves for nurses
- Wipes
- Face shields
- Blue, white and black masks - per individual count
- **Cots - Ordered**

Bus Drivers

(Serving 15,000 student riders)



- Cloth masks
- Gloves
- Face shields
- Electrostatic sprayers (backpack and handheld)
- Electrostatic sprayer disinfectant

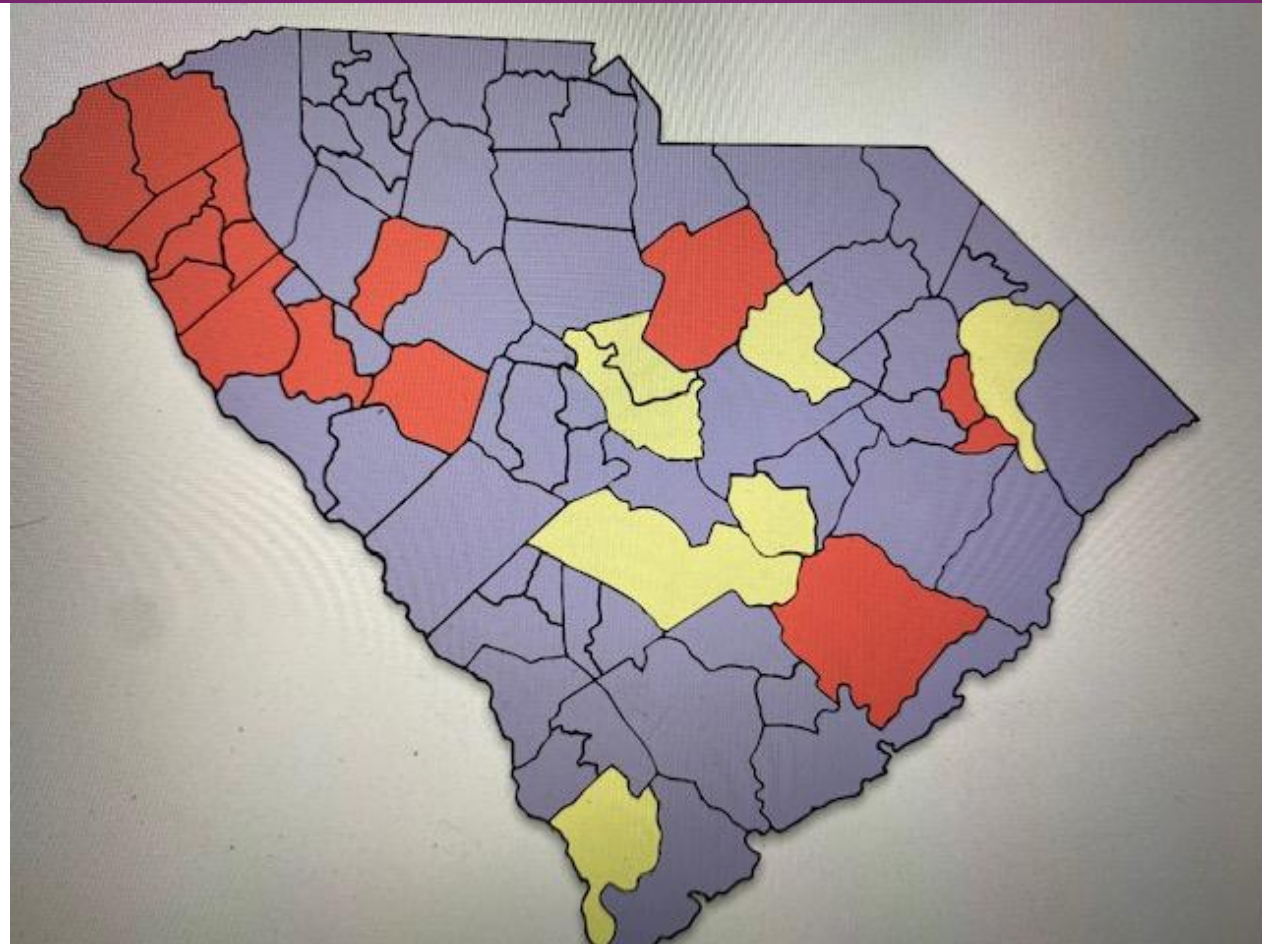
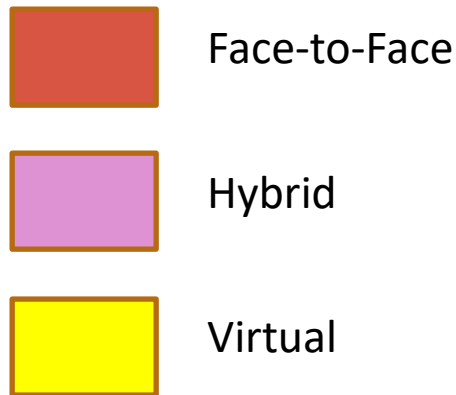
Student Nutrition Services



- Cloth masks
- Face shields
- Gloves



Current Operational Status of School Districts in South Carolina

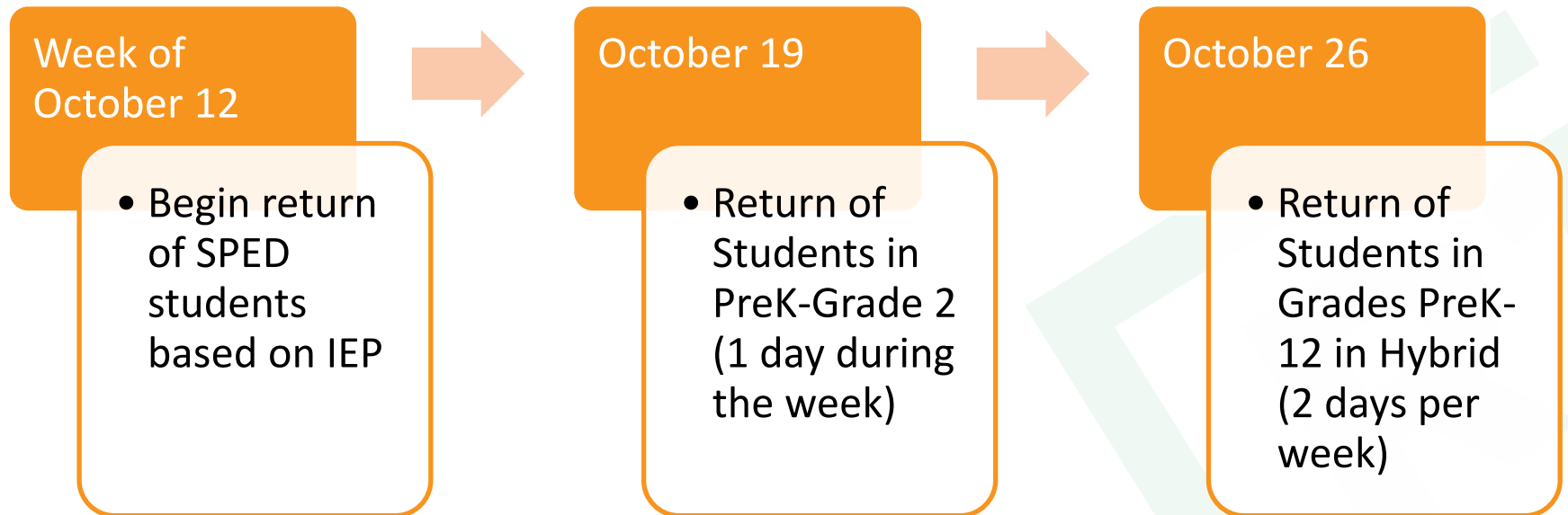


Reports from Other Districts



- Charleston County School District returned to school when their data were similar to ours.
- Some districts that returned when risk rates were higher than Richland One now have lower risk rates than when they returned.
- Some districts that are operating in a face-to-face model have metrics that are currently higher than those of Richland One.

Richland One Plan



Week of October 12



- Limited number of SWDs
- Asynchronous learning for all students on October 15-16
 - Teacher planning
 - Room preparation
 - Practice of protocols



Week of October 19 – PreK-2



PreK-2

**All other grades (3-12) continue in eLearning.*

- **Monday**
 - A students (in school)
 - B students (at home)

- **Tuesday**
 - A & B eLearning (at home)

- **Wednesday – Flex Day**
 - A & B (at home)

- **Thursday**
 - B students (in school)
 - A students (at home)

- **Friday**
 - A & B eLearning (at home)



Week of October 26



PreK-12

	M	T	W	Th	F
A Group	F2F	F2F	Flex	Asynchronous	Asynchronous
B Group	Asynchronous	Asynchronous	Flex	F2F	F2F

*District will provide guidance regarding use of Flex Day.

**Asynchronous learning will look different for PreK-5 and 6-12.

Phase 2



- Implementing 5 mitigation strategies is KEY to success!
 - Students in elementary grades will remain in cohorts, to the greatest extent possible.
 - “Lazy river” traffic patterns will be implemented to the greatest extent possible. Signs should mark traffic flow. Following traffic patterns should be practiced with teachers, and everyone (including teachers and administrators) will be expected to follow the patterns.
- Dashboard will be published to advise parents/community of COVID activity.

Social Distancing – Class Size Concerns



- If social distancing cannot be accomplished due to number of students in an assigned class, students in middle and high schools will need to rotate through virtual labs in order to maintain social distancing.
 - Ex: Algebra 1 class has 30 students, but only 10 can fit safely in the room. The class will be divided into 3 groups. Group 1 will be in class with the teacher during Week 1, while Groups 2 and 3 attend the class remotely in a virtual “lab” that could be in the auditorium, cafeteria, or some other large space. During Week 2, Group 2 is in the classroom with the teacher, while Groups 1 and 3 are in the virtual lab. During Week 3, Group 3 is in the classroom with the teacher, while Groups 1 & 2 are in the virtual lab.
 - Virtual labs must have proctors.
 - Groups from multiple classes may be in the lab at once.
 - Example: At the same time there are 20 students from Algebra I in the lab, there may be 4 students from a World Geography class, as well.

Considerations



- October 15 and 16 will be asynchronous learning days, which will allow teachers time to plan, prepare rooms, and practice for students' return.
- Students in Grades PreK-5 will transition to the second portion of Phase 2, as soon as practical and safe. They will attend school four (4) days per week rather than five (5).
- Wednesdays will be “flex” days for all.
 - Office hours for teachers will be posted and followed.
 - Interventions/services that are planned will be monitored.
- Plans for learning will be communicated to parents at least weekly.
- Data will continue to be monitored to determine if a return to eLearning is necessary to ensure the safety of students and staff.

Parent Concerns



- Parents who wish for their child to return to school for face-to-face instruction should complete a *Desire to Return to School Notification Form* no later than October 14. Parents will be notified of space/staffing availability to accommodate their request.
- Depending on the number of teachers who volunteer to return to school before the district reaches the Medium risk rate, some student and teacher reassignments may be made.
- Class sizes may increase to the extent that the number of days provided for hybrid instruction *may* have to be reduced.

Transitioning Between Models



- *Desire to Return to School Notification Forms* will be due no later than 5 PM on October 14.
- Applications to withdraw from the Virtual School Program are available online, as well, and are due no later than 5 PM on October 14.
- EDs of Schools and EDs of Programs will begin working with HR and Operations on October 15 to make staffing decisions.
- Decisions regarding transitions will be made at the district level due to staffing considerations, access, equity, etc.
- Principals will not promise parents their child will have the same teacher.

Concerns Related to Teachers



- Every attempt will be made to match teachers and students who wish to return for face-to-face instruction and to allow teachers who do not feel comfortable returning to the classroom to teach students whose parents wish for them to remain in a virtual environment.
- Teachers who have health concerns that may impact their ability to teach may be eligible for FMLA or may wish to request accommodations. Please reach out to HR to determine which is applicable.
- Teachers who have issues related to childcare that may impact their ability to teach may apply for E-FMLA.
- Teachers who need mental or emotional support should contact EAP.
- The possibility of offering rapid testing is being explored.

An Expert Opinion in Response to Review of Richland One Data



There is no objective data I can find that says that it is safe to open schools with a positivity rate above 10%. Below 10% is where I would consider face to face, and below 5% is the recommendation.

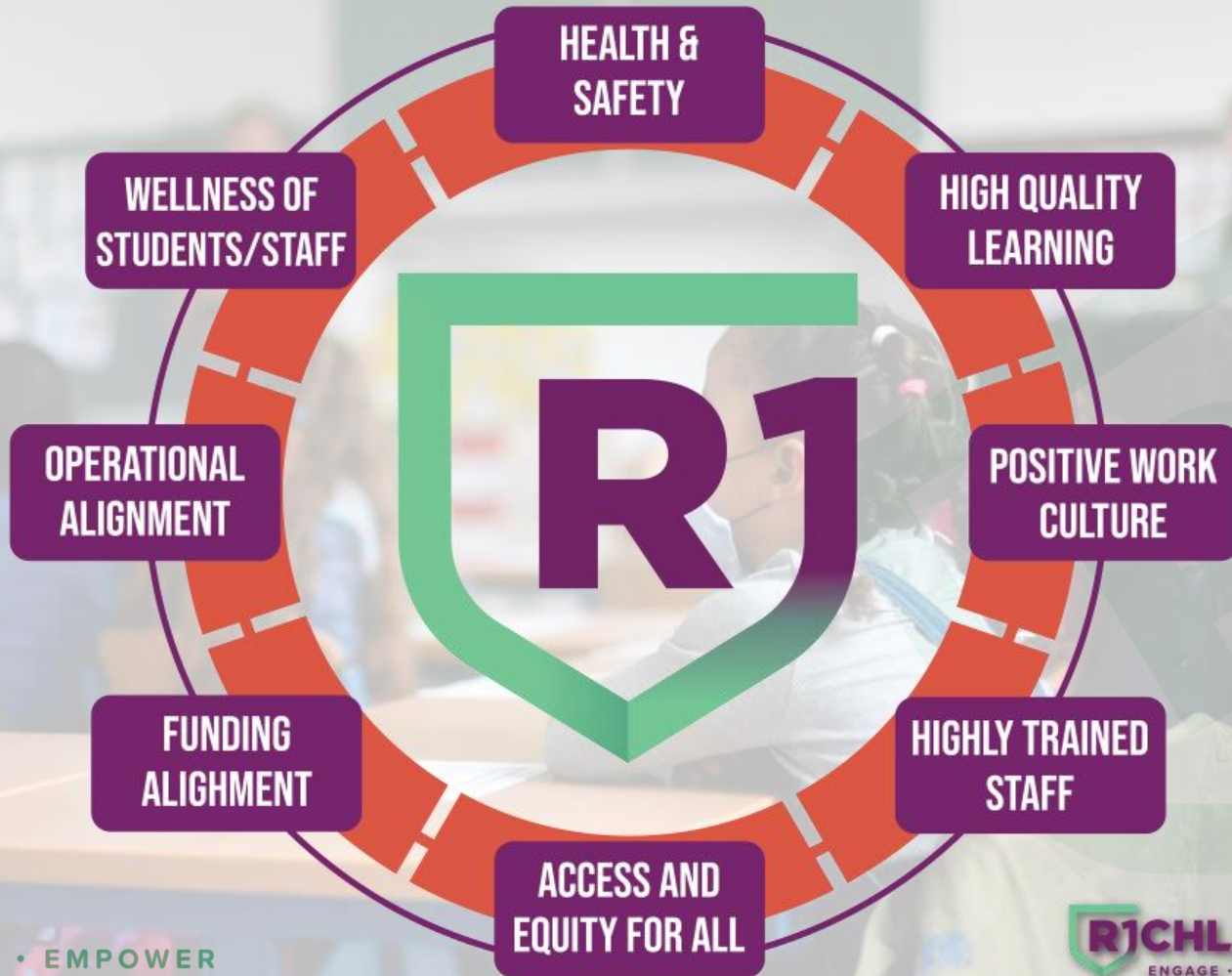
The community must be willing to make sacrifices to invest in the education of their children. These sacrifices are small when thinking about how not making them jeopardizes the future of our nation and their education system.

Students need to be back in school, but the community must do their part to get them there. Currently, it seems that you have been failed. Access to rapid testing for students and staff is also of high importance to be able to quickly identify people who are positive and quarantine close contacts.

Dr. Jake A. Kleinmahon, Director of Pediatric Heart Transplant and Heart Failure
Ochsner Hospital for Children



REOPENING PRIORITIES



• EDUCATE • EMPOWER

