



RICHLAND ONE

Internet Network Access for District's Extended-Stay Guests

December 18, 2023

The District has (3) production wireless networks available.

- ✓ RichlandOne
- ✓ **R1_StaffLink**
- ✓ R1_Visitors (School/Site Name)

Note: Devices brought in by R1's extended-stay guests are only permitted to use the R1_StaffLink network for filtered Internet access.

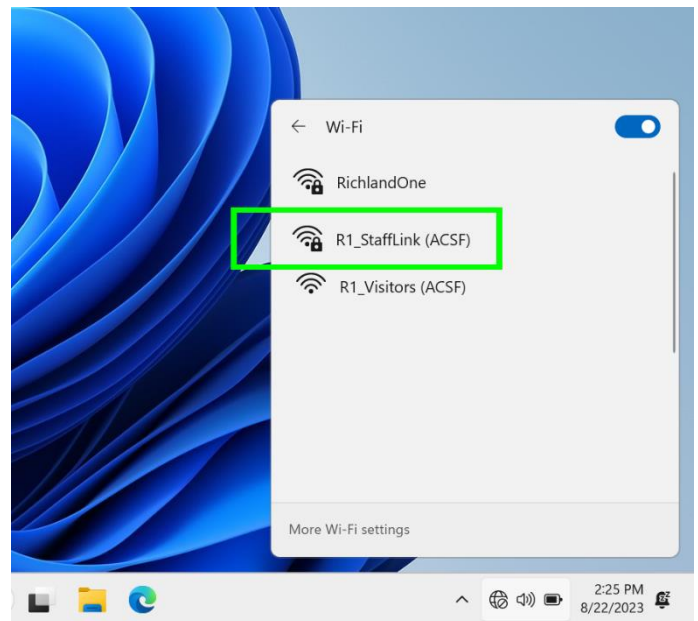
IMPORTANT: A valid Microsoft Active Directory User account belonging to the (R1-SpecialGuests-802.1x) group will need to be created and assigned before guests will be able to attach to the network.

Step-by-step instructions for guest owned laptops.

Step 1: Make sure your WiFi is enabled and scan for available wireless networks.

Select the R1_StaffLink network that will pop-up in your list of available networks to continue.

All guest owned devices must connect only to designated R1_StaffLink networks. These are restricted networks designed to provide filtered access to the Internet for guest owned devices. Be advised the Richland One AUP will apply to activity on these connections and that all activity on these networks will be monitored and logged.

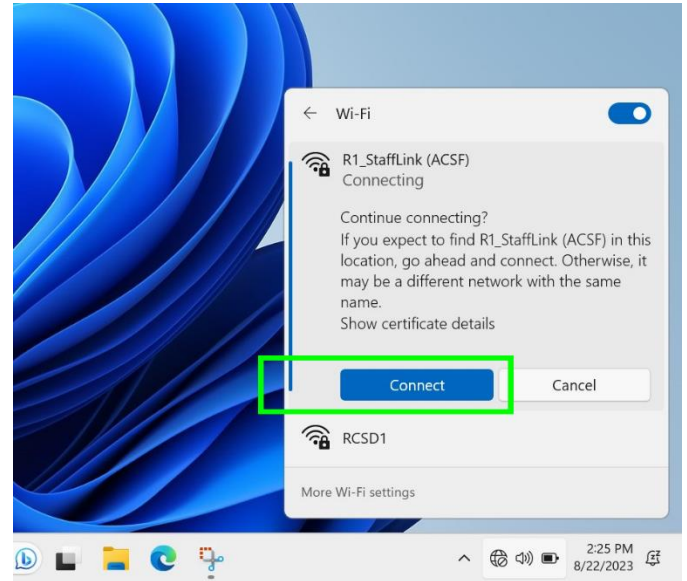




Step 2: When first connecting your laptop computer you may be prompted to accept a digital certificate. Click Connect to continue.

Extended-stay guests that wish to connect will need to select the R1_StaffLink network and use the Active Directory user account credentials mentioned above to log in.

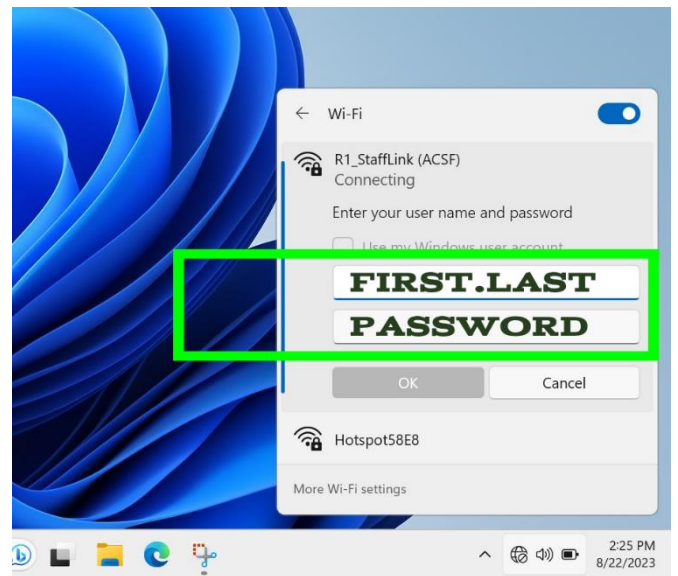
Access will be monitored for this network at all times. If at any time malicious traffic is detected the guest will be disconnected from the network and will not be allowed future access. Richland One IT staff **cannot assist guests in connecting and/or troubleshooting devices not owned by the District.**



Step 3: You will be required to use the Richland One Microsoft Active Directory credentials mentioned above to secure access to the R1_StaffLink network.

IMPORTANT: A valid Microsoft Active Directory User account belonging to the (R1-SpecialGuests-802.1x) group will need to be created and assigned before guests will be able to attach to the network.

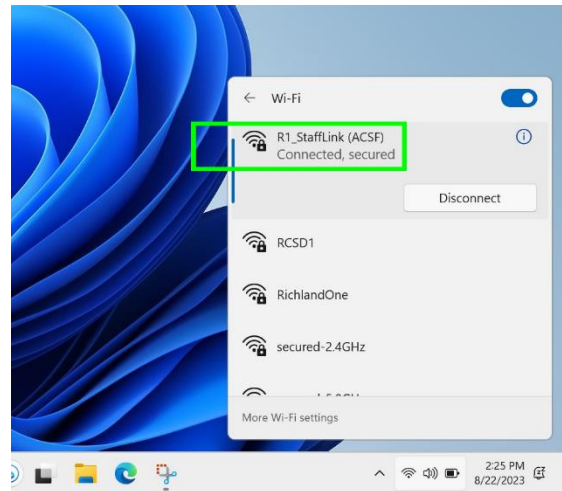
Never share your password with coworkers or students.





Step 4: Once connected the Microsoft Windows WiFi selection tool will display ‘Connected, secured’ in the call-out window.

After connecting, close the WiFi tool call-out and your computer is ready for use on the network.



Please Note:

Activity on this network is always monitored. **Never share your password with coworkers or students.** If malicious traffic is detected the user will be disconnected from the network and will not be allowed future access. Richland One IT staff **cannot assist staff in connecting and/or troubleshooting their personal devices** to this network.