

Fall 2006

PSAT Results



Richland One
South Carolina's Capital Schools

Office of Research and Evaluation

PSAT/NMSQT

General Information

- PSAT/NMSQT is Preliminary SAT/National Merit Scholarship Qualifying Test
- Co-sponsored by College Board and National Merit Scholarship Corporation (NMSC)
- Practice test for SAT
- Qualifying test for scholarship and merit programs
- Advanced Placement


PSAT

Description

- Measures critical reading, math problem-solving and writing skills
- Yields three scores ranging from 20 to 80 points
 - Critical Reading (previously Verbal)
 - Math
 - Writing

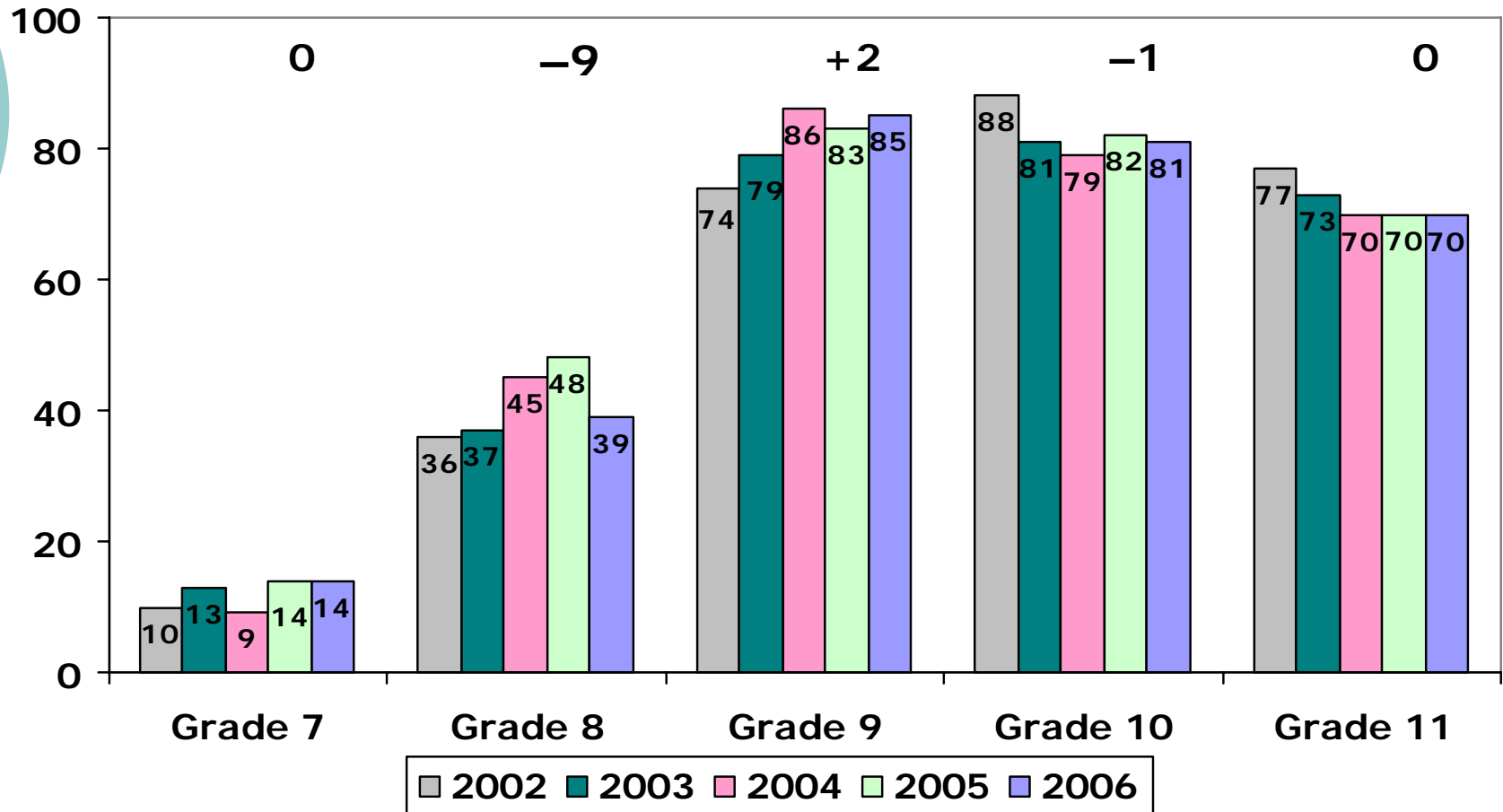
PSAT Changes in October 2004

- Changes parallel SAT changes
- Verbal
 - Renamed Critical Reading
 - Analogies replaced by short reading passages
- Math
 - Higher level content included from arithmetic reading, algebra and geometry
 - Quantitative comparisons eliminated
 - 2 additional student-produced response questions
- Writing
 - Shorter testing by 5 minutes (30 to 25 minutes)
 - Multiple-choice questions similar to new SAT
 - No official essay

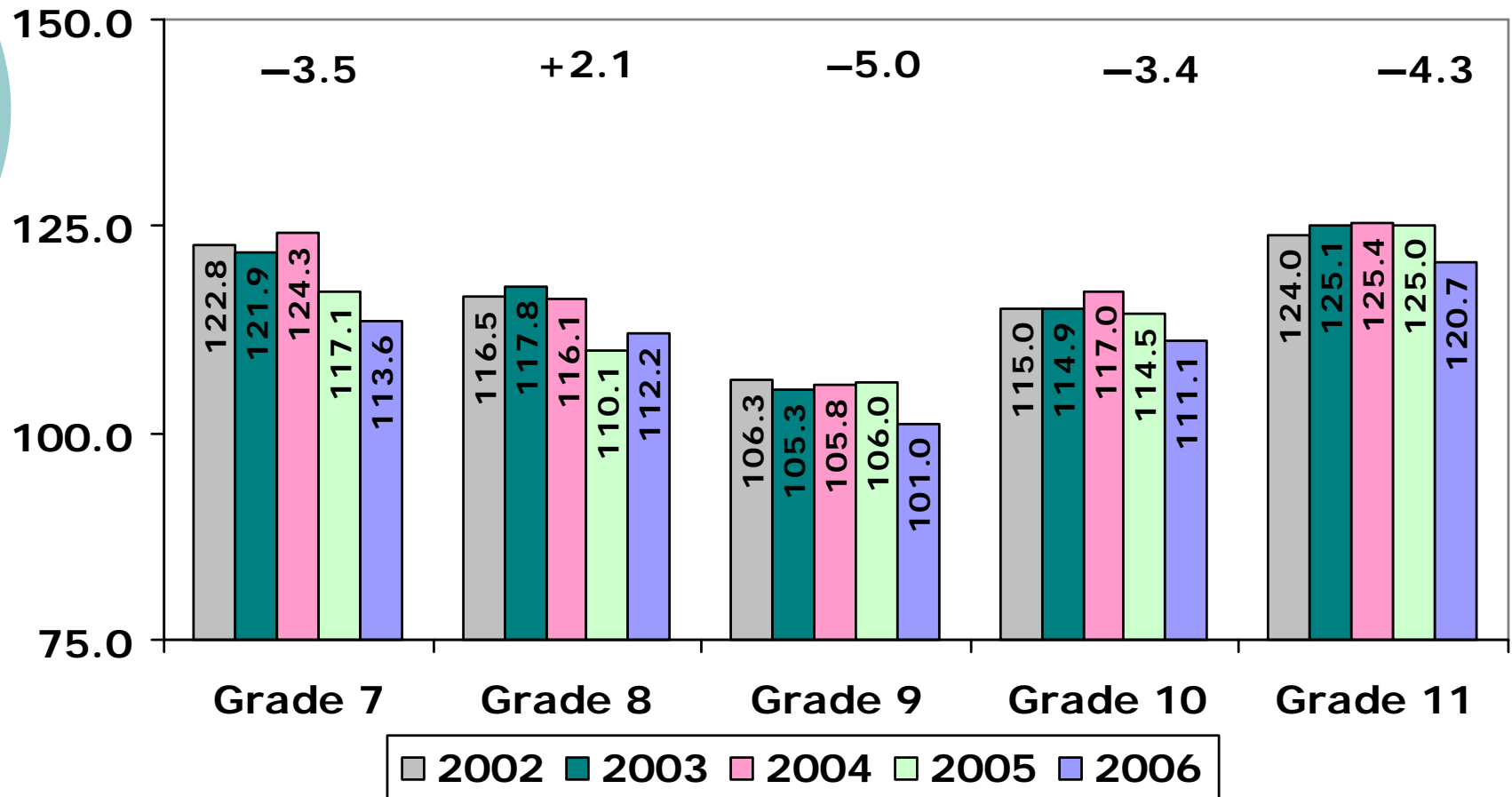


***District
Percent Tested
and
Average Scores***

PSAT Percent Tested of 45-Day ADM

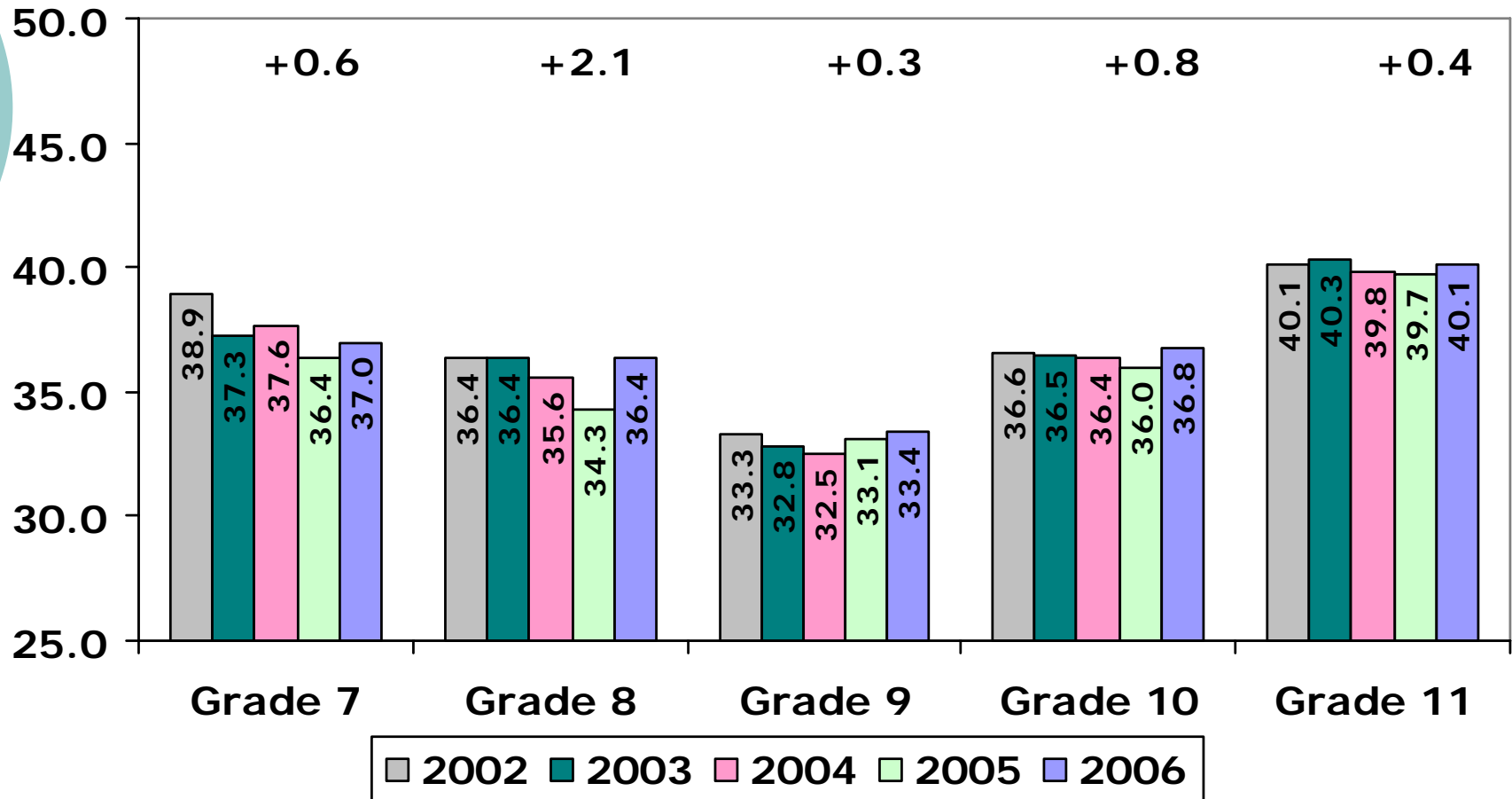


District Average Scores PSAT Total*



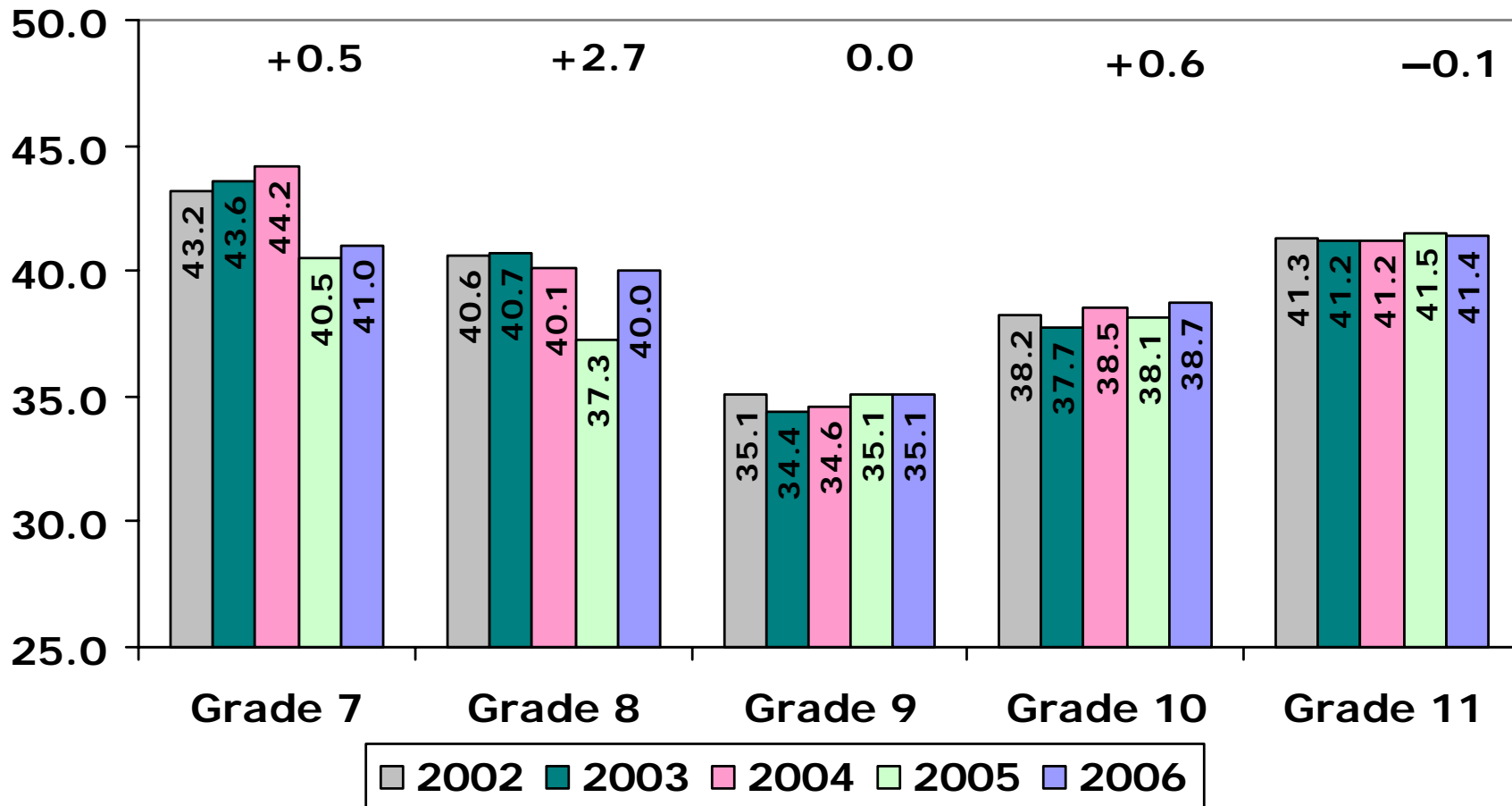
* Note: Total is sum of Critical Reading, Math and Writing scores.

District Average Scores PSAT Critical Reading*

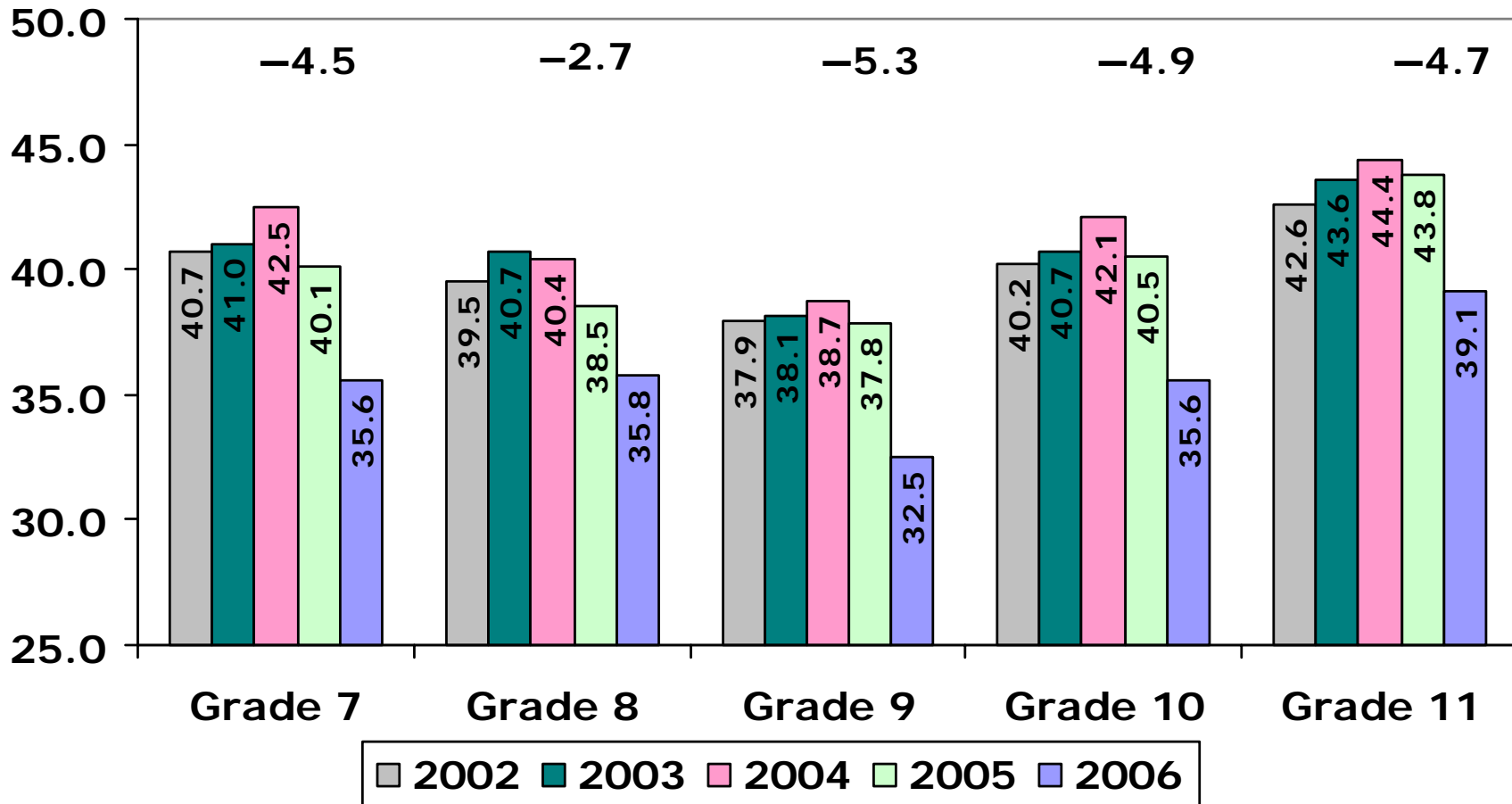


* Note: Verbal renamed Critical Reading beginning Fall 2004.

District Average Scores PSAT Math



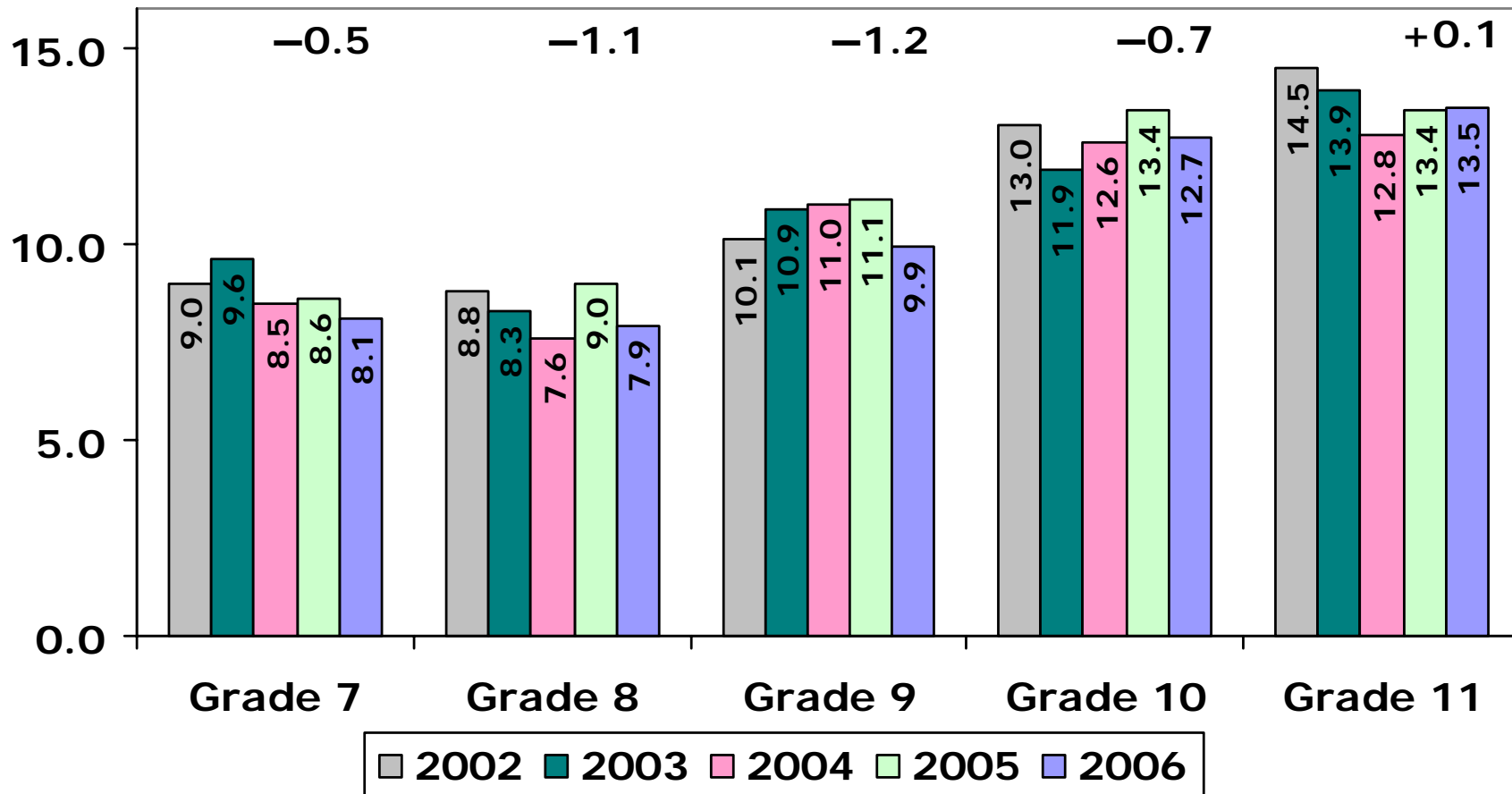
District Average Scores PSAT Writing





District
Race Achievement Gap
Between White and
African-American Students

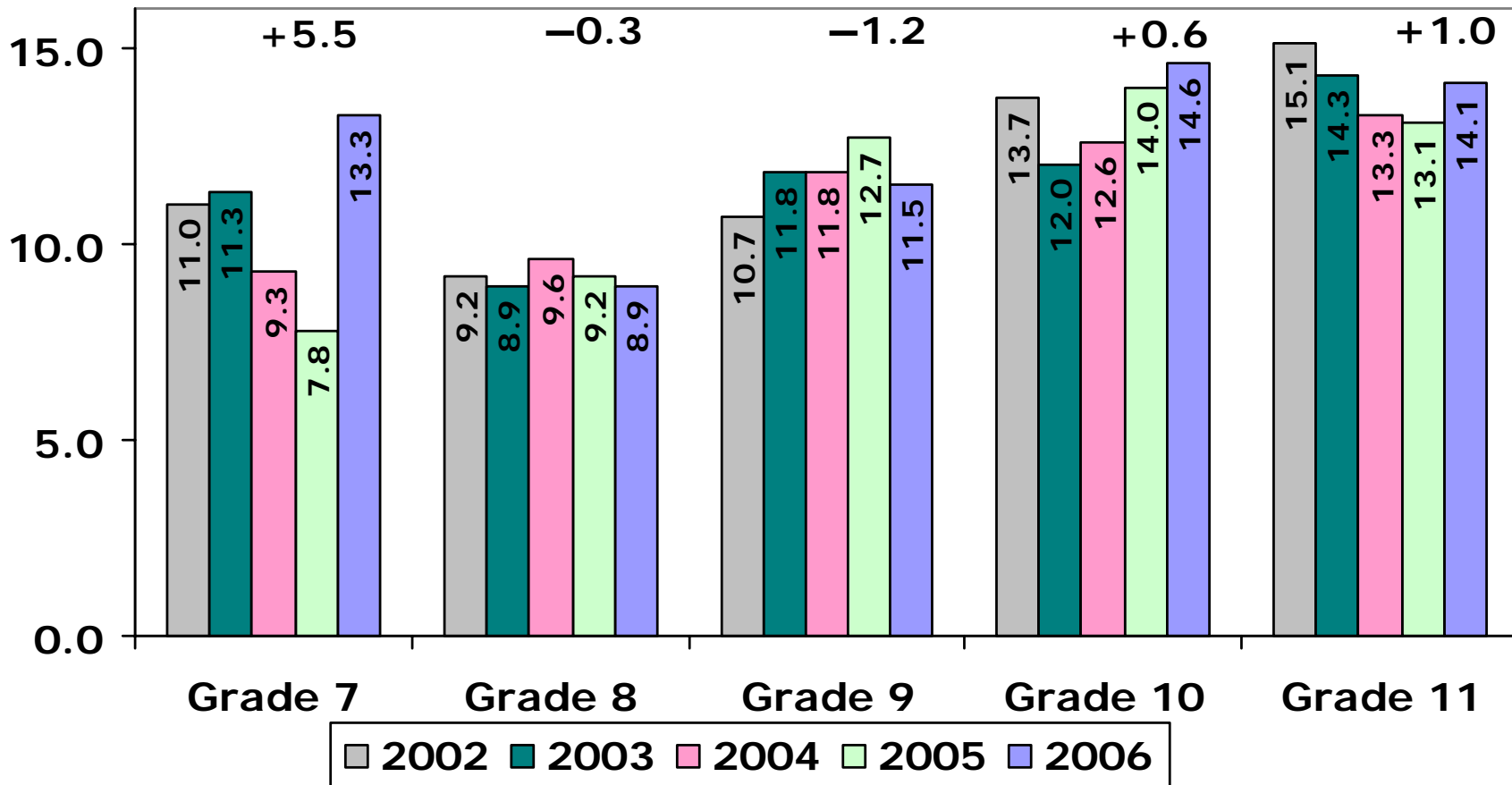
Race Achievement Gap PSAT Critical Reading*



Gap is African-American average subtracted from White average.

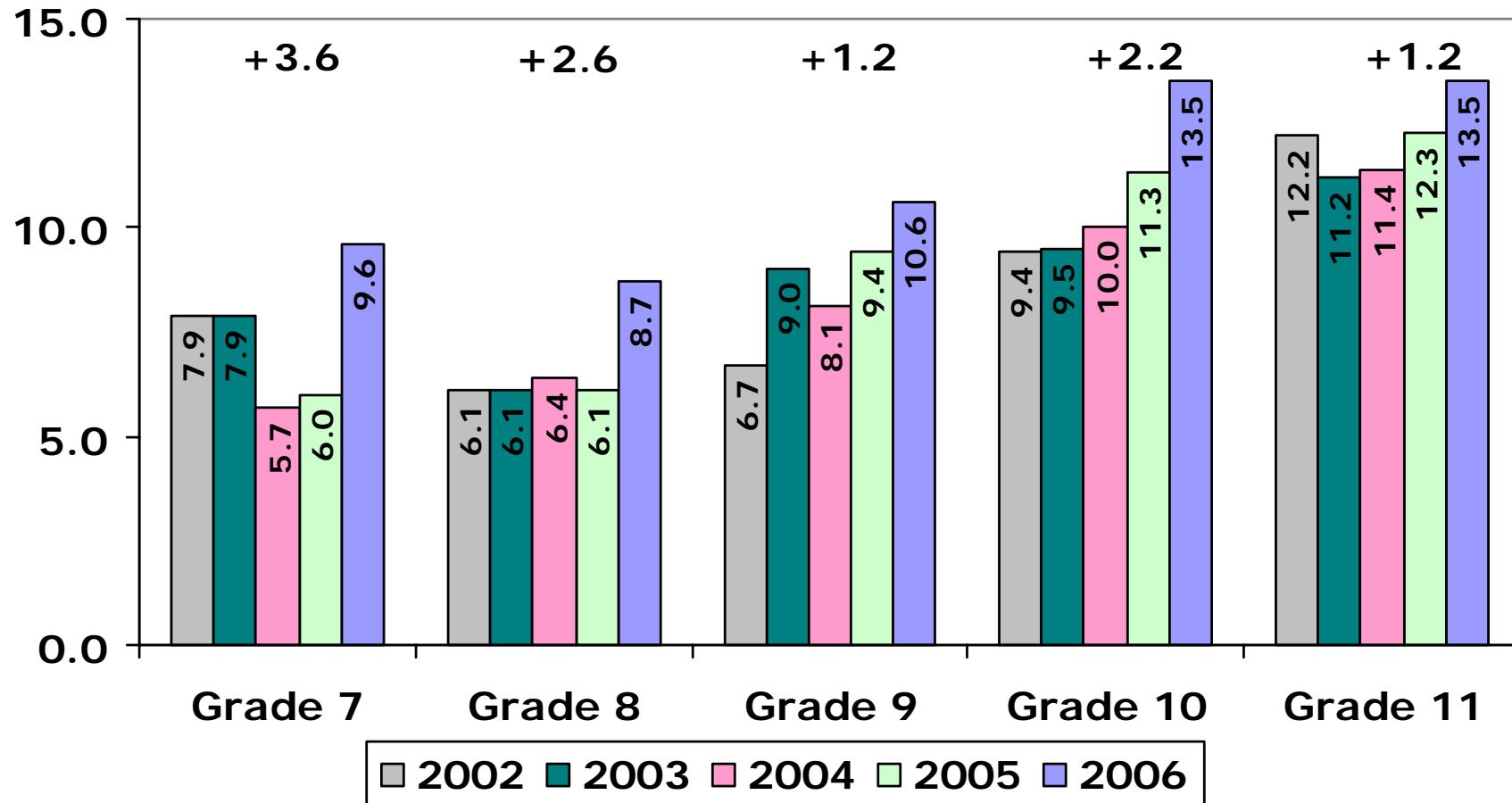
* Note: Verbal renamed Critical Reading beginning Fall 2004.

Race Achievement Gap PSAT Math



Gap is African-American average subtracted from White average.

Race Achievement Gap PSAT Writing



Gap is African-American average subtracted from White average.