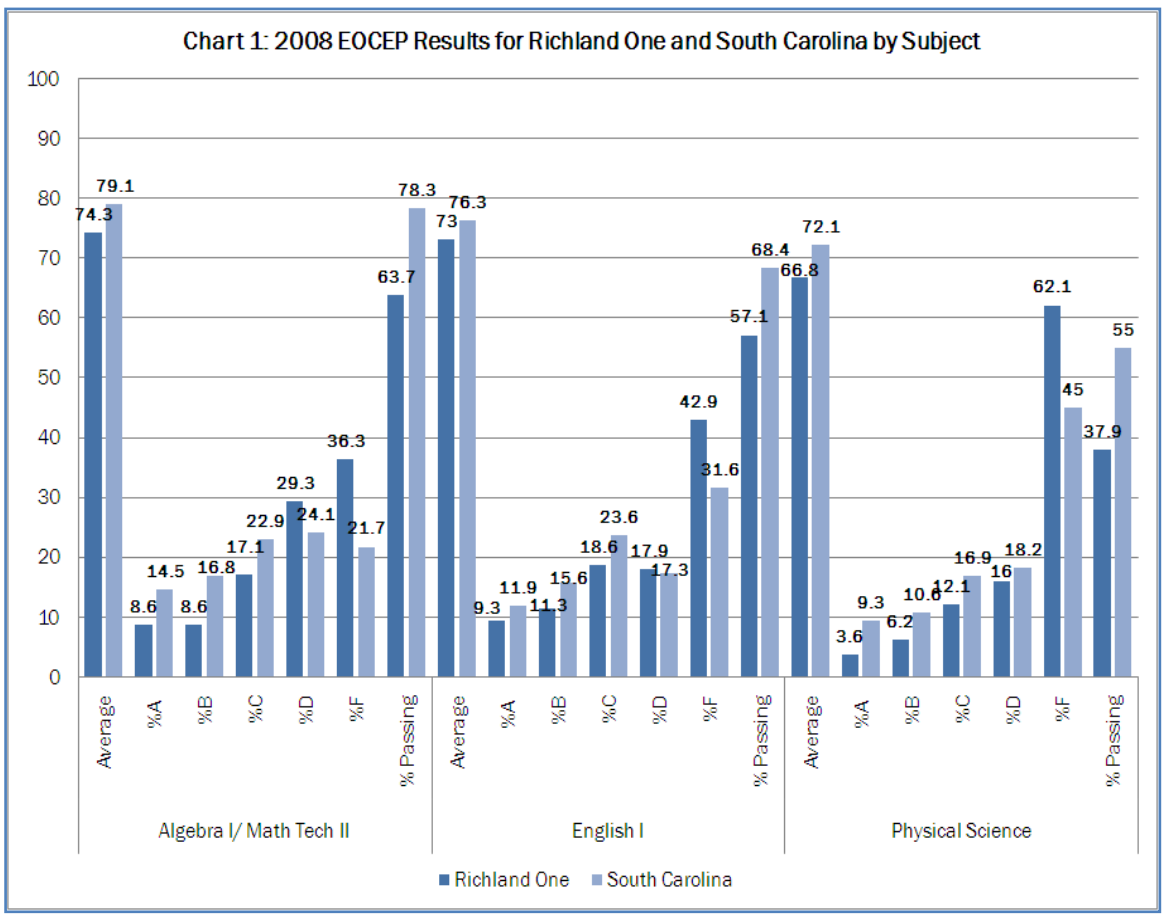


2008 Richland One and South Carolina EOCEP Score Comparison

On the state's 100-point uniform grading scale, scores above 92 would obtain a grade "A", 85-92 a "B", 77-84 a "C", 70-76 a "D", and an "F" for scores lower than 70. The number of Richland One students who took EOCEP, average score, percentage passing, and grade distribution are provided in Chart 1 for each of the three tests excluding U. S. History and Constitution. Richland One students obtained an average of 74.3 on Algebra I/Math for the Technologies II compared to 79.1 for the state average. Approximately two-thirds (63.7%) of the Richland One students passed the test while 78.3% of South Carolina students passed.

Richland One students passed the highest percentage of students in Algebra I (63.7%), followed by English I (57.1%), and Physical Science (37.9%). When compared with the state passing rates, district students performed worse in Algebra I (-14.6%), English I (-11.3%) and Physical Science (-17.1%).



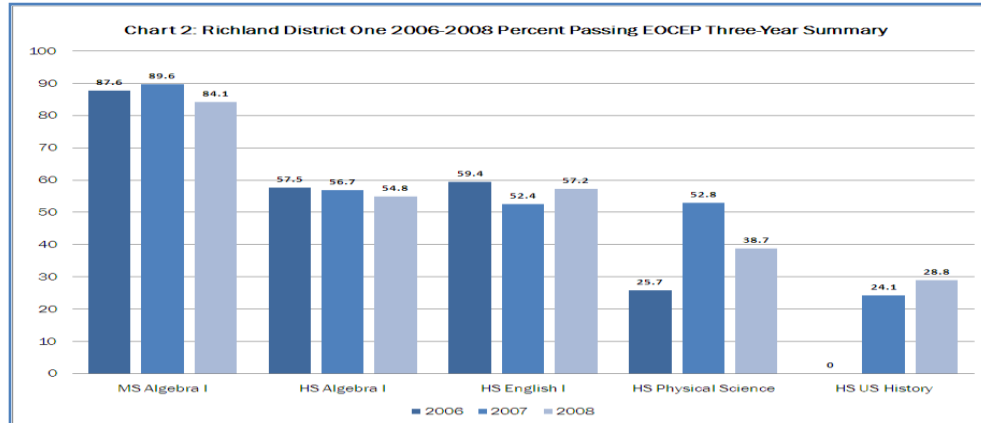
Keeping in the Know... Testing Overview

The Education Accountability Act of 1998 mandates the development and administration of the end-of-course tests in benchmark courses for mathematics, English language arts, science, and social studies called the End-of-Course Examination Program (EOCEP). The algebra test was first piloted in the 2002-2003 school year, while English I, Physical Science, and Biology I/Applied Biology II were added to the program in 2004-2005. Biology I was no longer offered in 2006-2007. U.S. History and Constitution was offered in 2006-2007.

Students enrolled in Algebra I, Mathematics for the Technologies II, English I, Physical Science, and U.S. History and Constitution are required to take the end-of-course tests. Because students were required to take the test at the end of the semester in which they were scheduled to complete the course, three different administrations were held last year due to variations in scheduling: fall 2007, spring 2008, and summer 2008. Scores on these EOCEP tests were required to be counted as 20 percent of each student's final course grade with the exception of U.S. History and Constitution.

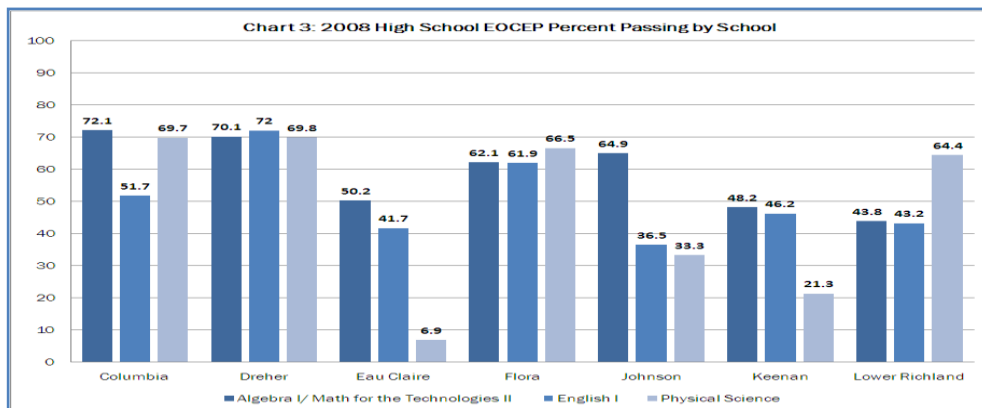
Three-Year Trend of EOCEP Results by Subject

Chart 2 provides the 3-year trend of EOCEP results. District middle school students performed better than high school students on Algebra I as they were on the accelerated academic tracks. For 2008, nearly nine-tenths (84.1%) of the middle school students passed the test; only slightly more than half (54.8%) of the high school students passed.



2008 EOCEP Percent Passing by High School by Subject

Passing results by high school are provided in Chart 3. Six of seven high schools passed more than half of their students on the Algebra I test, and the percentages of passing ranged from 38.9% (Eau Claire) to 67.3% (Johnson). While five of seven high schools passed more than half of their students in English I with the highest passing rate (73.7%) occurring at Dreher, two Richland One high schools passed more than half of their students in Physical Science with Dreher again earning the highest rate (64.0%) and Flora coming in with the second highest rate (53.7%).



Three-Year (2006-2008) EOCEP Results by Subject

Table 3 provides the historical trend for all tests. Compared with 2007 performance, Richland One students improved on the English I test (+4.8%) but showed decreased passing rates for both Algebra I (-1.9%) and Physical Science (-14.1%).

In terms of school performance, Keenan showed improvement on all three tests, Lower Richland showed improvement on two of three tests while the remaining five high schools improved on only one test. Five of the seven schools made gains in English I with gains ranging from +1.7% (Dreher) to +8.9% (Keenan). On the other hand, five of the seven high schools showed declined performance in Physical Science, while three schools made gains in Algebra I ranging from +2.4% (Johnson) to +7.2% (Lower Richland).

Table 1: Three-Year EOCEP Test Results for High Schools by

School	Year	Algebra I		Biology I		English I		Physical Science	
		% Pass	±Yr. Diff.	% Pass	±Yr. Diff.	% Pass	±Yr. Diff.	% Pass	±Yr. Diff.
Columbia	2006	68.1	22.4	22.6	-4.5	57.1	-0.5	19.3	1.4
	2007	72.1	4	-	-	51.7	-5.4	69.7	50.4
	2008	66.3	-5.8	-	-	58.7	7	25	-44.7
Dreher	2006	64.3	-8.1	48.5	-23.5	73.9	-1.9	48.4	27.8
	2007	70.1	5.8	-	-	72	-1.9	69.8	21.4
	2008	64.3	-5.8	-	-	73.7	1.7	64	-5.8
Eau Claire	2006	61.1	7.6	15.9	10.8	42.5	6.8	5.6	-7.7
	2007	50.2	-10.9	-	-	41.7	-0.8	6.9	1.3
	2008	38.9	-11.3	-	-	39.4	-2.3	37.7	30.8
Flora	2006	62.6	-2.8	60.9	2.4	69.9	4.7	49	-
	2007	62.1	-0.5	-	-	61.9	-8	66.5	17.5
	2008	54.3	-7.8	-	-	66.8	4.9	53.7	-12.8
Johnson	2006	62.9	8.1	8.8	-2.9	54.5	16.9	15.6	8
	2007	64.9	2	-	-	36.5	-18	33.3	17.7
	2008	67.3	2.4	-	-	33.3	-3.2	20	-13.3
Keenan	2006	48.9	-7.2	29.7	3.1	56.4	15.4	17.7	4.3
	2007	48.2	-0.7	-	-	46.2	-10.2	21.3	3.6
	2008	51.2	3	-	-	55.1	8.9	33.8	12.5
Lower Richland	2006	47	6.1	14.6	1.2	56.4	1	23.1	13.6
	2007	43.8	-3.2	-	-	43.2	-13.2	64.4	41.3
	2008	51	7.2	-	-	52	8.8	20.3	-44.1
All High Schools	2006	57.5	3.3	26.4	-8.6	59.4	5.7	25.7	12
	2007	56.7	-0.8	-	-	52.4	-7	52.8	27.1
	2008	54.8	-1.9	-	-	57.2	4.8	38.7	-14.1

* Numbers in bold indicates positive change over previous year.