

2008 Education Oversight Committee (EOC) Survey: Quick Facts

Richland County School District One

Office of Accountability, Assessment, Research and Evaluation (AARE) ~ August 2009

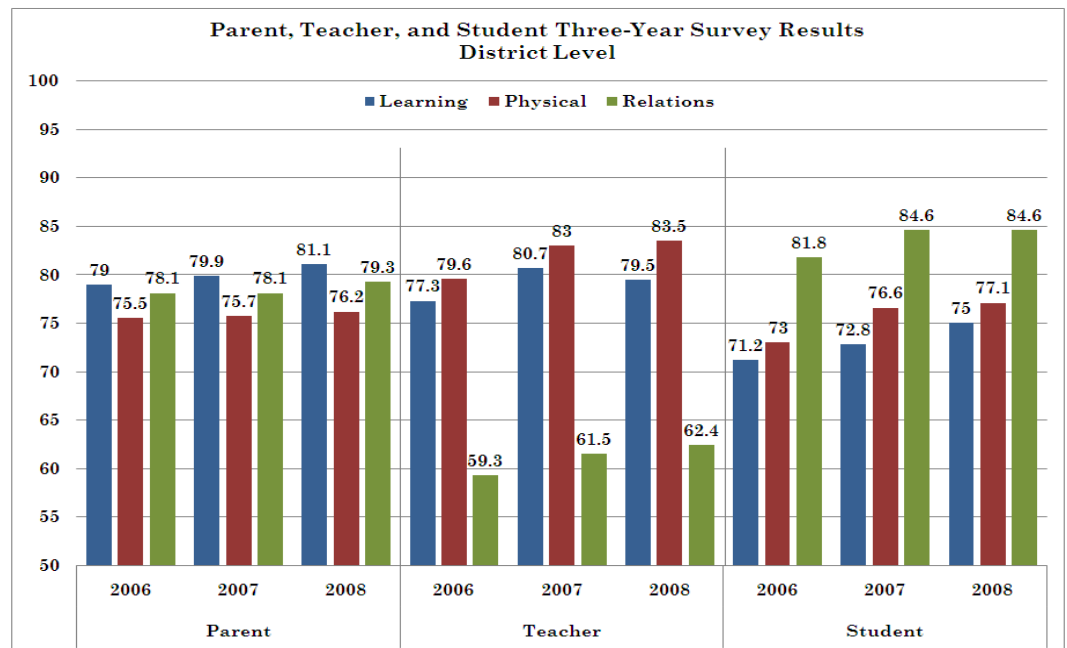
EOC Survey Overview

The Education Accountability Act of 1998 specifies that “school report cards should include information in such areas as...evaluations of the school by parents, teachers, and students.” To obtain these evaluations, the (EOC) has constructed student, teacher, and parent surveys that are designed to measure perceptions on three major strands: the school’s **learning environment**, the school’s **social and physical environment** and **home and school relations**. Surveys are designed as follows:

1. Parent surveys contain 46 questions, soliciting perceptions about schools and parent activities.
2. Teacher surveys contain 55 items, soliciting perceptions about schools, leadership, and disciplines.
3. Student surveys contain 43 items (44 for high schools), soliciting perceptions about schools, teachers, and disciplines.

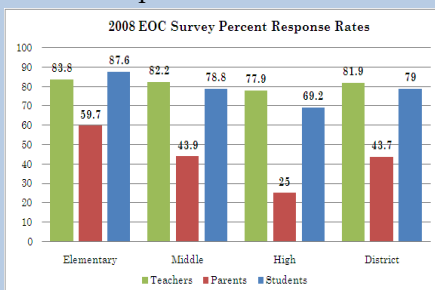
Richland One Parents and Students are Satisfied with the School’s Learning and Physical Environment and Home Relations

In 2008, the majority, over three-fourths, of the Richland One parents stated that they were satisfied in all three strands; learning environment (81.1%), physical environment (76.2%) and home school relations (79.3). More than four-fifths (84.6%) of the Richland One students were satisfied with Home-School relations while at least 75% of them were satisfied with Learning and Physical/Social Environment. Over 80% of the Richland One teachers were satisfied with the Learning and Physical/Social Environment. Overall, satisfaction ratings for parents, students and teachers increased from the previous two years on all three areas. Note: District data do not include charter schools or schools with low response rates.



Survey Response Rates:

In 2008, a district total of 2,158 parents, 3,899 students and 1,818 teachers returned EOC surveys. Note: Surveys were administered to 5th, 8th and 11th grade parents and students only. The chart below illustrates the percent response rate by group and school level based on the districts 135th average daily membership.



Parent, Student and Teacher Most and Least Favorable Survey Items – District Level

PARENTS: Most Favorable

1. My child’s teachers encourage my child to learn (89.9)
2. Make sure my child does his/her homework (92.0)
3. The school’s overall friendliness (77.1)

STUDENTS: Most Favorable

1. My teachers expect students to behave (95.2)
2. My teachers expect students to learn (95.1)

TEACHERS: Most Favorable

1. Teachers at my school effectively implement the State Curriculum Standards (97.8)

PARENTS: Least Favorable

1. Students at my child’s school are well-behaved (49.0)
2. Participate in School Improvement Council meetings (16.3)
3. I don’t feel like it is appreciated when I try to be involved (13.0)

STUDENTS: Least Favorable

1. Students at my school behave well in the hallways, in the lunchroom, and on the playground (36.7)

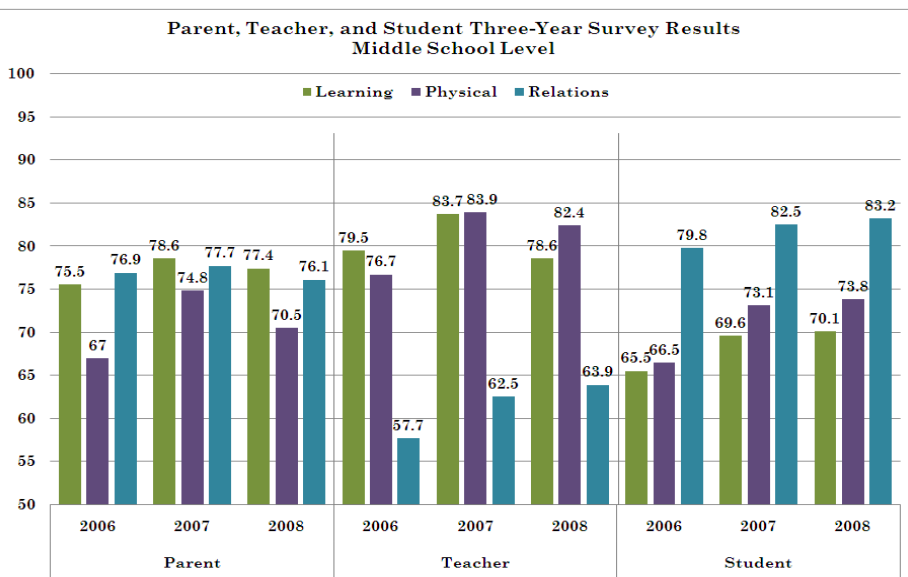
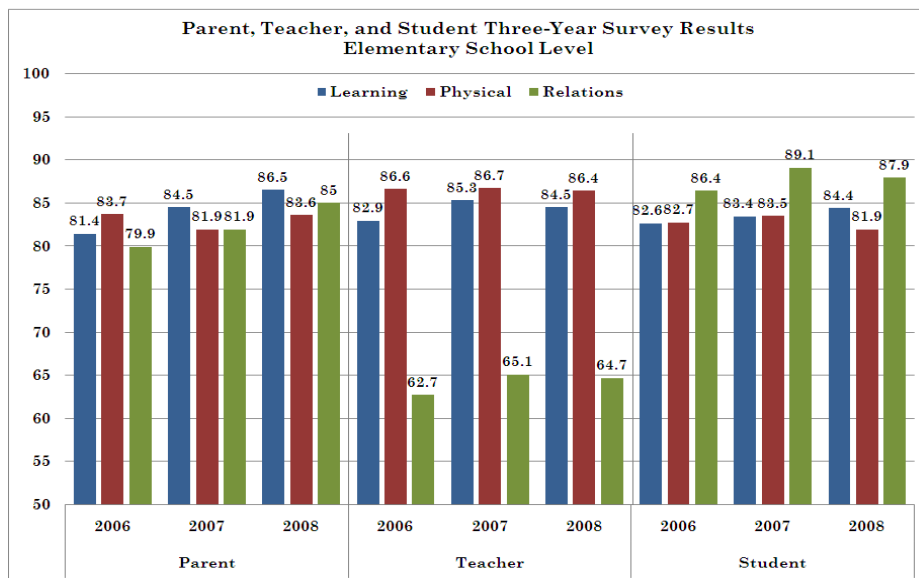
TEACHERS: Least Favorable

1. I am satisfied with my home and school relations (62.5)

Richland One Parent, Student and Teacher Three-Year Survey Results by Strand (Learning Environment, Social and Physical Environment, and Home-School Relations) and School Level

Elementary School Survey Results Summary

- **Parent:** At least 80% are satisfied with all three strand areas.
- **Student:** More than four-fifths were satisfied with all three areas.
- **Teacher:** Over 80% were satisfied with the Learning and Physical/Social Environment while at least 60% of them were satisfied with Home-School relations.
- Satisfaction ratings for parents, students and teachers mostly increased from the previous two years on all three areas.



Middle School Survey Results Summary

- **Parent:** Majority, over 75%, are satisfied with the school's Learning and Home School Relations.
- **Student:** Mostly satisfied with Home-School relations at 83.2%.
- **Teacher:** Over 75% were satisfied with the Learning and Physical/Social Environment while only around 60% of them were satisfied with Home-School relations.
- Teachers and students have made positive gains in at least one strand over the last three years.

High School Survey Results Summary

- **Parent:** Compared to 2006 were less satisfied in all three strand areas.
- **Student:** Similar to both elementary and middle students felt most satisfied with Home-School relations represented by 81.6%.
- **Teacher:** Compared to elementary and middle school teachers were the least satisfied with the Home-School relations ranging from 53-57% for the last three years.
- Overall, satisfaction ratings for students and teachers increased on all three areas while decreasing for parents.

